

Light efficiency:

50 Lumen/Watt

Light quality:

CRI: 90.8

Color temperature:

3261 K

Output: 18968 lm

Peak: 148174 cd

Power: 383 W

PF: 1.0

No photo

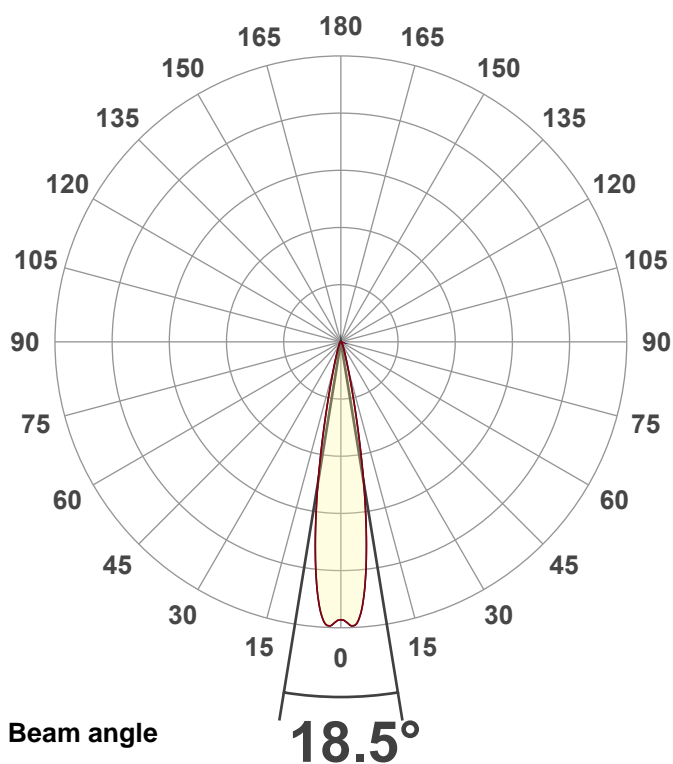
Product name:

40 Hex Panel IP (Full On,3200K)

Item number:

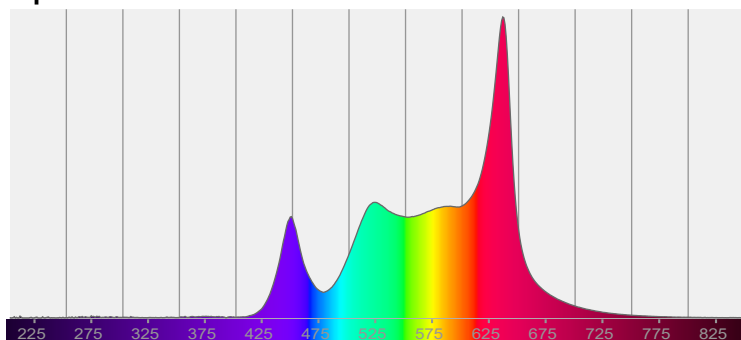
Date and time:

10/9/2025 1:56:28 PM



CIE 1931  
x: 0.419  
y: 0.395

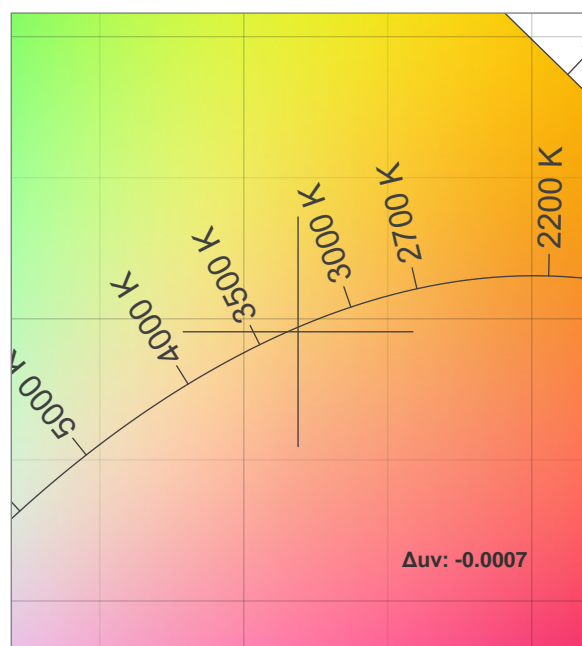
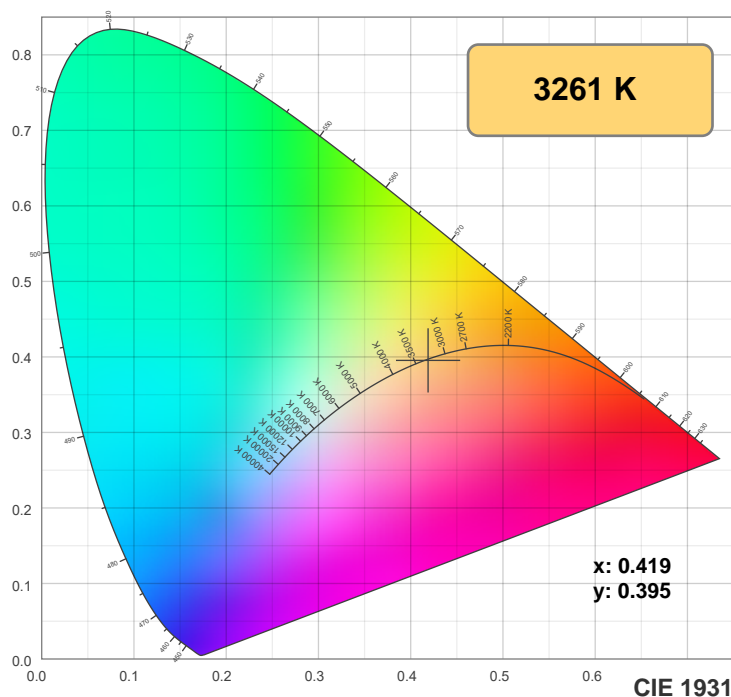
Spectra



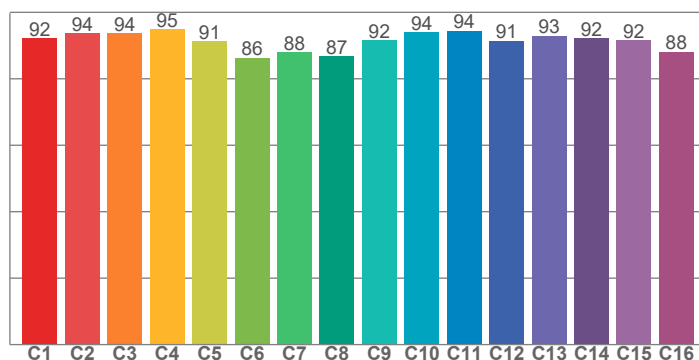
Power

Voltage: 116 V  
Current: 3.30 A  
Frequency: 0 Hz

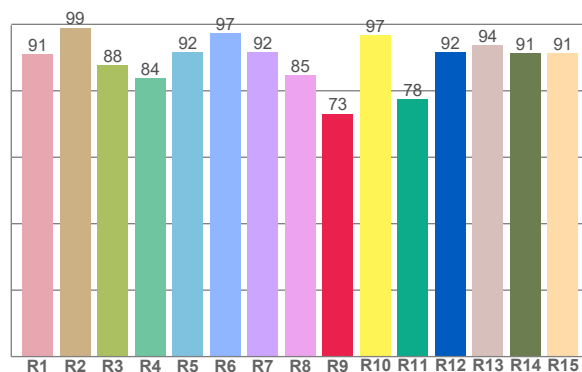
## Color details



**TM-30: 91.8**



**CRI: 90.8 (R1-R8)**



CRI R values, only R1-R8 are used to calculate final CRI value

R1	R2	R3	R4	R5	R6	R7	R8	R9	R10	R11	R12	R13	R14	R15
91.0	99.0	87.6	83.8	91.5	97.3	91.5	84.6	73.1	96.8	77.6	91.5	93.6	91.4	91.3

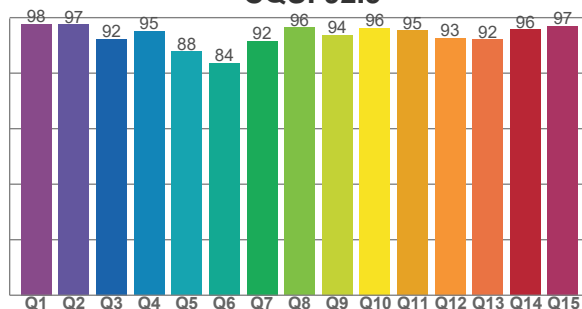
TM30 C values, 16 binned values out of total of 99 C values

C1	C2	C3	C4	C5	C6	C7	C8	C9	C10	C11	C12	C13	C14	C15	C16
92.1	93.7	93.7	94.9	91.3	86.3	88.0	86.8	91.6	93.9	94.4	91.4	93.0	92.3	91.7	88.1

CQS Q values

Q1	Q2	Q3	Q4	Q5	Q6	Q7	Q8	Q9	Q10	Q11	Q12	Q13	Q14	Q15
97.8	97.5	92.3	95.1	87.8	83.7	91.5	96.4	93.8	96.3	95.3	92.7	92.0	95.7	97.0

**CQS: 92.5**



### Color parameters

Color temperature	Color rendering index	Red component	Color fidelity	Color gamut	Color quality scale	Color coordinate cie 1931	Color coordinate cie 1931	Color coordinate	Color coordinate	Color deviation from black body
CCT	CRI	CRI R9	TM30 Rf	TM30 Rg	CQS	x	y	u	v	Δuv
3261 K	90.8	73.1	91.8	107.8	92.5	0.419	0.395	0.243	0.343	-0.0007

# TM-30 details

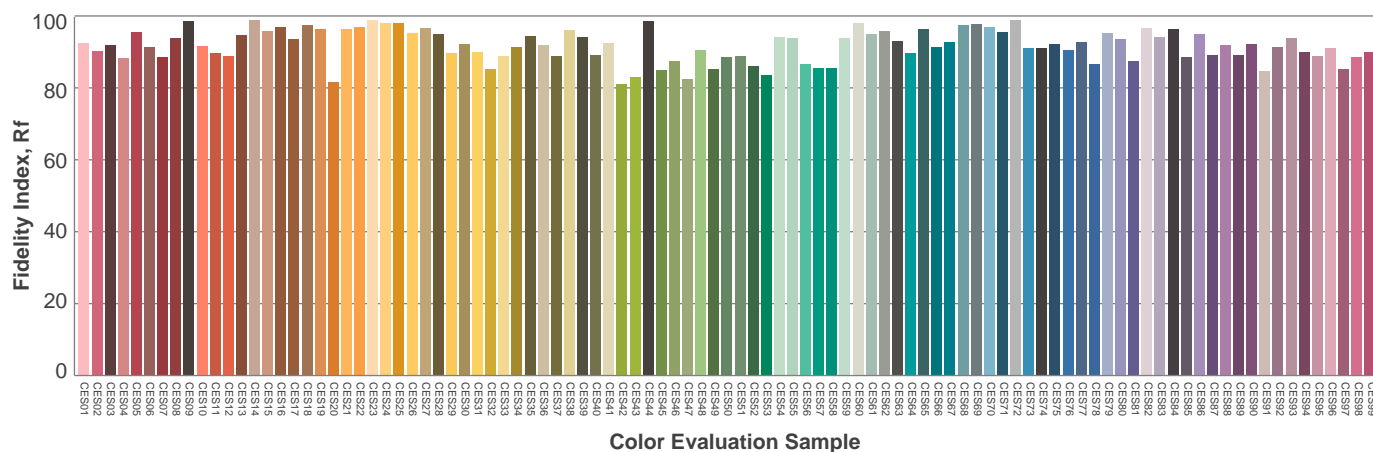
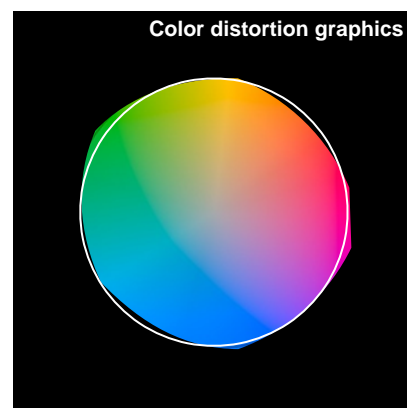
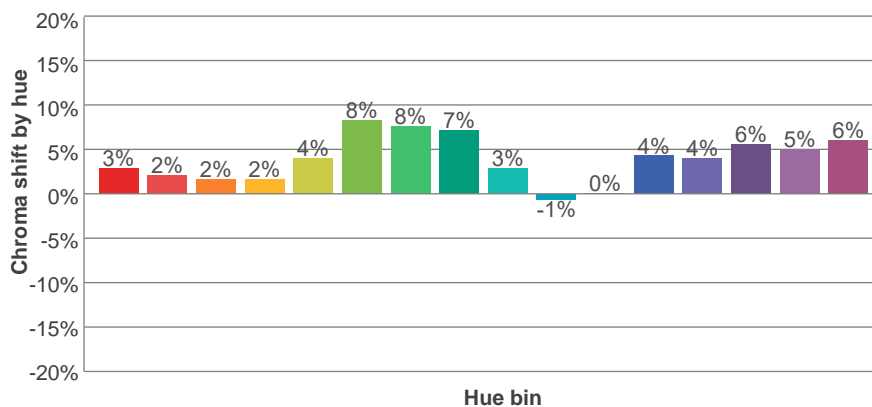
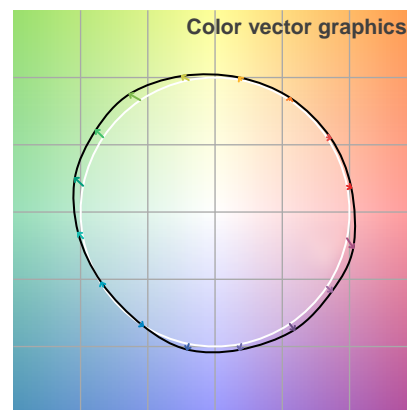
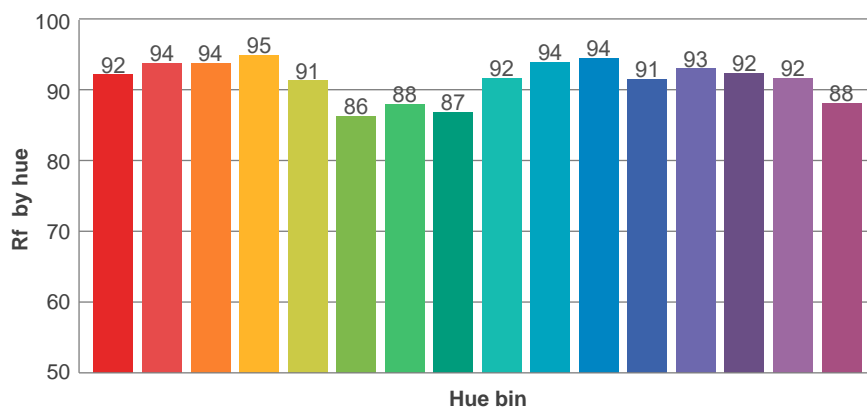
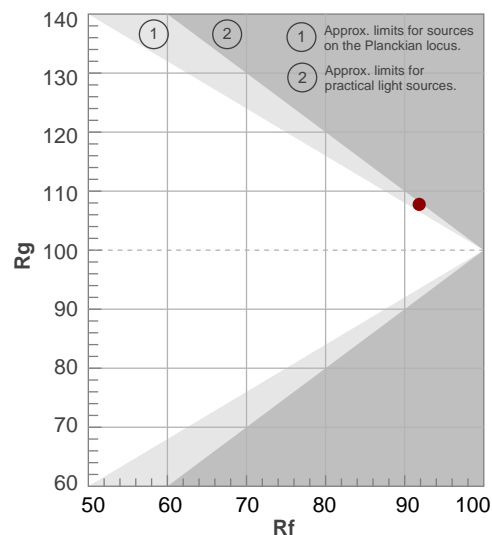
**Rf 91.8**

Fidelity index Rf

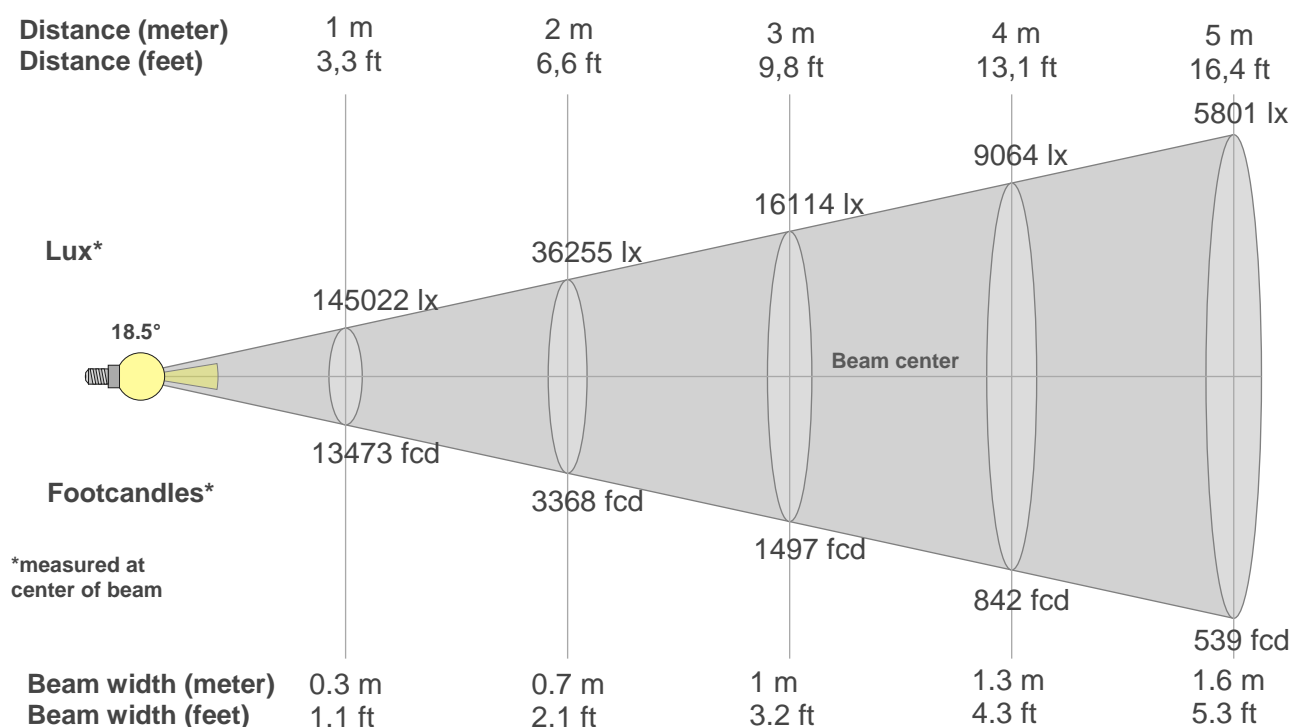
**Rg 107.8**

Gamut index Rg

Hue Bin	Ri	Shifts (%)	
		Chroma	Hue
1	92	3%	-2%
2	94	2%	-2%
3	94	2%	1%
4	95	2%	2%
5	91	4%	4%
6	86	8%	4%
7	88	8%	-1%
8	87	7%	-4%
9	92	3%	-5%
10	94	-1%	-3%
11	94	0%	2%
12	91	4%	-1%
13	93	4%	-2%
14	92	6%	0%
15	92	5%	-1%
16	88	6%	-6%



## Beam details



### Beam intensities from 1-20m

1m	2m	3m	4m	5m	6m	7m	8m	9m	10m	11m	12m	13m	14m	15m	16m	17m	18m	19m	20m
3.3ft	6.6ft	9.8ft	13.1ft	16.4ft	19.7ft	23ft	26.2ft	29.5ft	32.8ft	36.1ft	39.4ft	42.7ft	45.9ft	49.2ft	52.5ft	55.8ft	59.1ft	62.3ft	65.6ft
145022lx	36255lx	16114lx	9064lx	5801lx	4028lx	2960lx	2266lx	1790lx	1450lx	1199lx	1007lx	858lx	740lx	645lx	566lx	502lx	448lx	402lx	363lx
13472.9 fcd	3368.2 fcd	1497 fcd	842.1 fcd	538.9 fcd	374.2 fcd	275 fcd	210.5 fcd	166.3 fcd	134.7 fcd	111.3 fcd	93.6 fcd	79.7 fcd	68.7 fcd	59.9 fcd	52.6 fcd	46.6 fcd	41.6 fcd	37.3 fcd	33.7 fcd

### Intensities in 0° c-plane

0°	1°	2°	3°	4°	5°	6°	7°	8°	9°	10°	11°	12°	13°	14°	15°	16°	17°	18°	19°
145k	146k	148k	148k	143k	135k	123k	109k	94k	78k	62k	47k	35k	26k	19k	15k	12k	10k	8k	7k
100%	101%	102%	102%	99%	93%	85%	75%	65%	54%	43%	33%	24%	18%	13%	10%	8%	7%	5%	5%

### Intensities in 90° c-plane

0°	1°	2°	3°	4°	5°	6°	7°	8°	9°	10°	11°	12°	13°	14°	15°	16°	17°	18°	19°
145k	146k	148k	148k	143k	135k	123k	109k	94k	78k	62k	47k	35k	26k	19k	15k	12k	10k	8k	7k
100%	101%	102%	102%	99%	93%	85%	75%	65%	54%	43%	33%	24%	18%	13%	10%	8%	7%	5%	5%

### Intensities in 180° c-plane

0°	1°	2°	3°	4°	5°	6°	7°	8°	9°	10°	11°	12°	13°	14°	15°	16°	17°	18°	19°
145k	146k	148k	148k	143k	135k	123k	109k	94k	78k	62k	47k	35k	26k	19k	15k	12k	10k	8k	7k
100%	101%	102%	102%	99%	93%	85%	75%	65%	54%	43%	33%	24%	18%	13%	10%	8%	7%	5%	5%

### Intensities in 270° c-plane

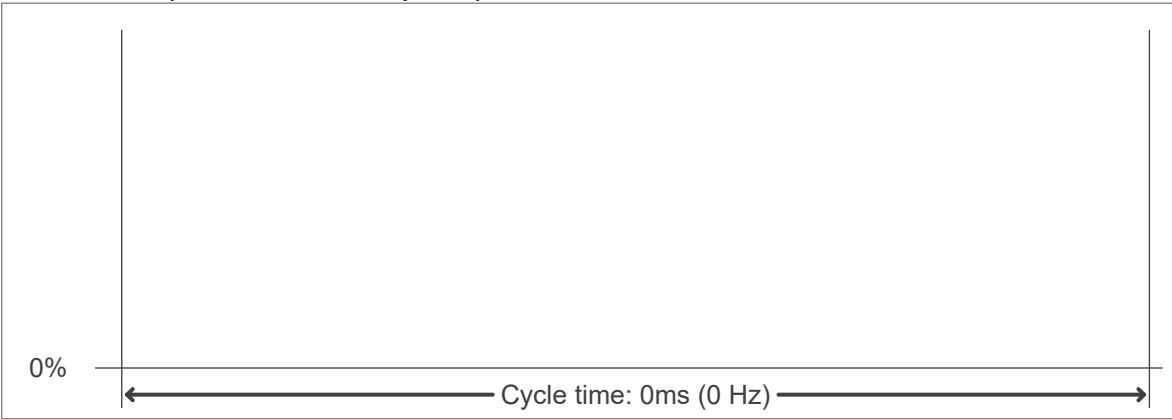
0°	1°	2°	3°	4°	5°	6°	7°	8°	9°	10°	11°	12°	13°	14°	15°	16°	17°	18°	19°
145k	146k	148k	148k	143k	135k	123k	109k	94k	78k	62k	47k	35k	26k	19k	15k	12k	10k	8k	7k
100%	101%	102%	102%	99%	93%	85%	75%	65%	54%	43%	33%	24%	18%	13%	10%	8%	7%	5%	5%

Beam angle 50%	Field angle 10%	Cutoff angle 2,5%	Intensity ratio in 120° cone	Intensity ratio in 90° cone
18.5°	30°	46.1°	97.3%	94.5%

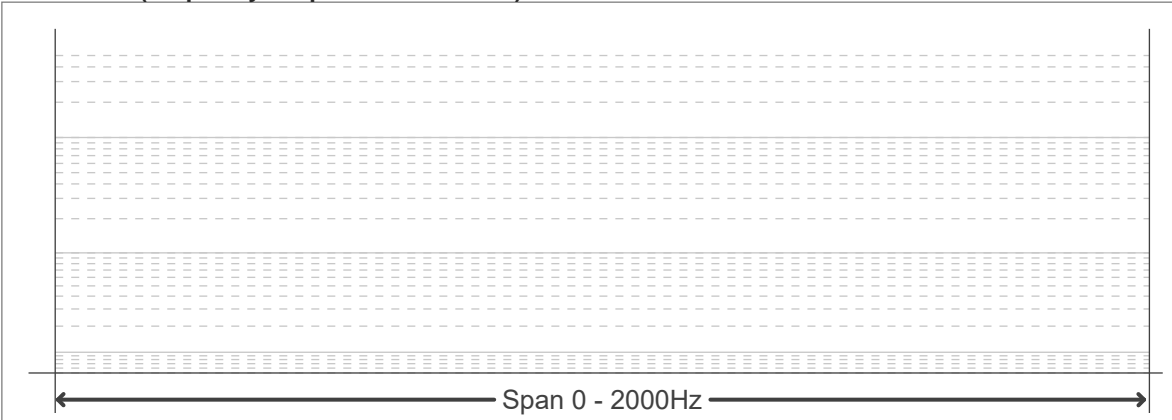
Flicker curve (complete sampled flicker signal)



Flicker frame (frame of one flicker period)



Flicker FFT (frequency scope of flicker curve)



Flicker results:

Flicker frequency:		n/a Hz	
Flicker index:	n/a	JA8/10 40Hz	n/a %
Flicker percentage:	n/a %	JA8/10 90Hz	n/a %
SVM: (Visual flicker)	n/a	JA8/10 200Hz	n/a %
PstLM	n/a	JA8/10 400Hz	n/a %
Mp	n/a	JA8/10 1000Hz	n/a %

Flicker conditions:

Sample rate:	n/a samples/second
--------------	--------------------